



**SOCIAL SECURITY BOARD**

**MINISTRY OF LABOR, IMMIGRATION AND POPULATION**

**SSB Information System Implementation  
(Data Entry & Cleaning Project)**

**Presented By**  
**Mr Maung Maung Aye**  
**Director General**

**17-9-2019 (Tuesday)**

# CONTENTS

1. About Social Security Board
2. Issues and Challenges of Information System Development
3. About Four Reforms for SSB
4. IT Reform (SSB Information System)
5. Data Entry and Cleaning Project
6. Advantages by doing Reforms
7. Q&A

# ABOUT SOCIAL SECURITY BOARD

**Established Year**

- **1956**

**Coordinated Team**

- **The National Tripartite Dialogue Program**

**The Umbrella Team**

- **Ministry of Labor, Immigration and Population**

**Reinstituted the  
new Social Security  
Law 2012**

- **2014**

# ABOUT SOCIAL SECURITY BOARD

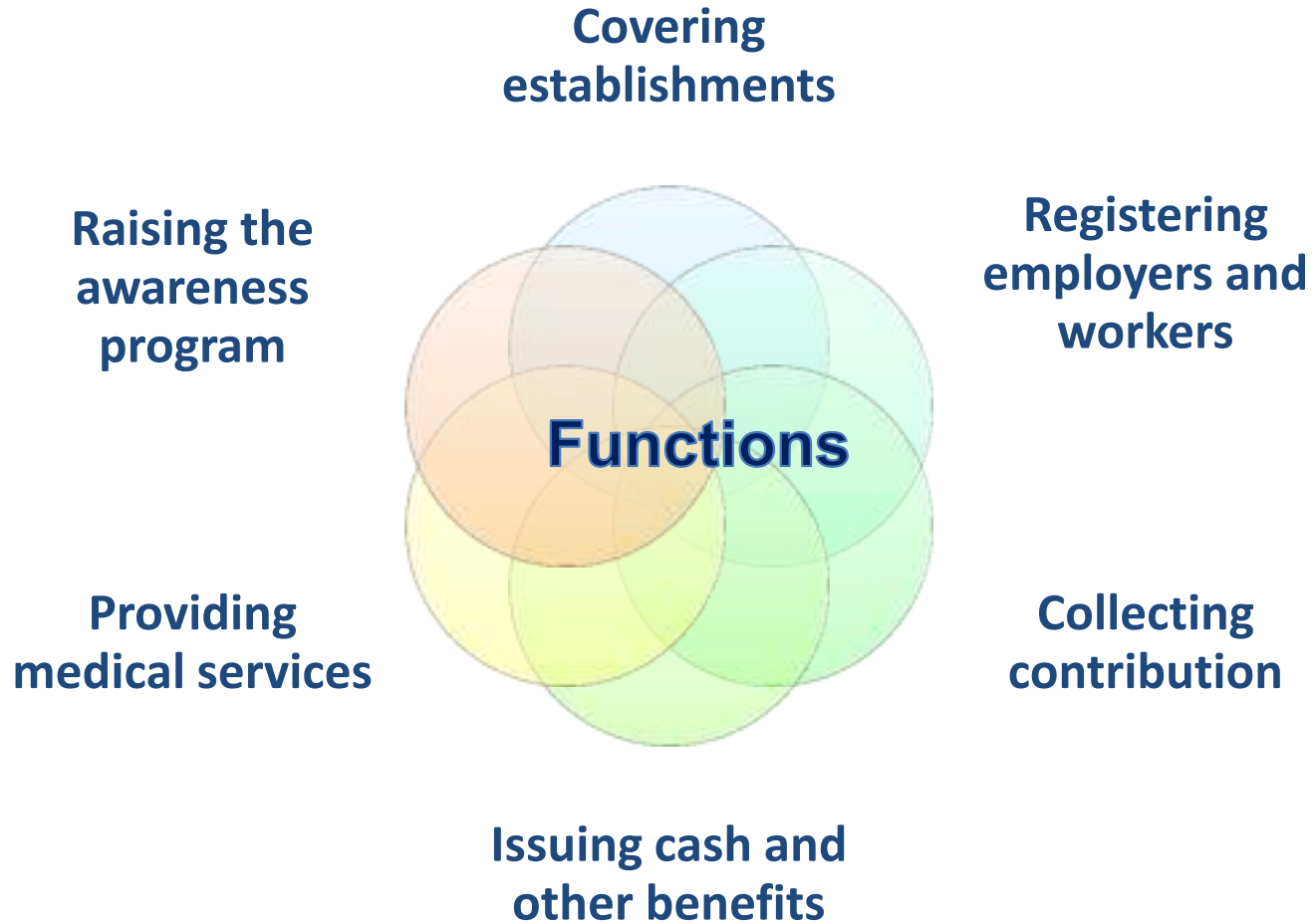
---

## **Vision**

**“To expand the Social Security Scheme to be able the whole nation for covering”**

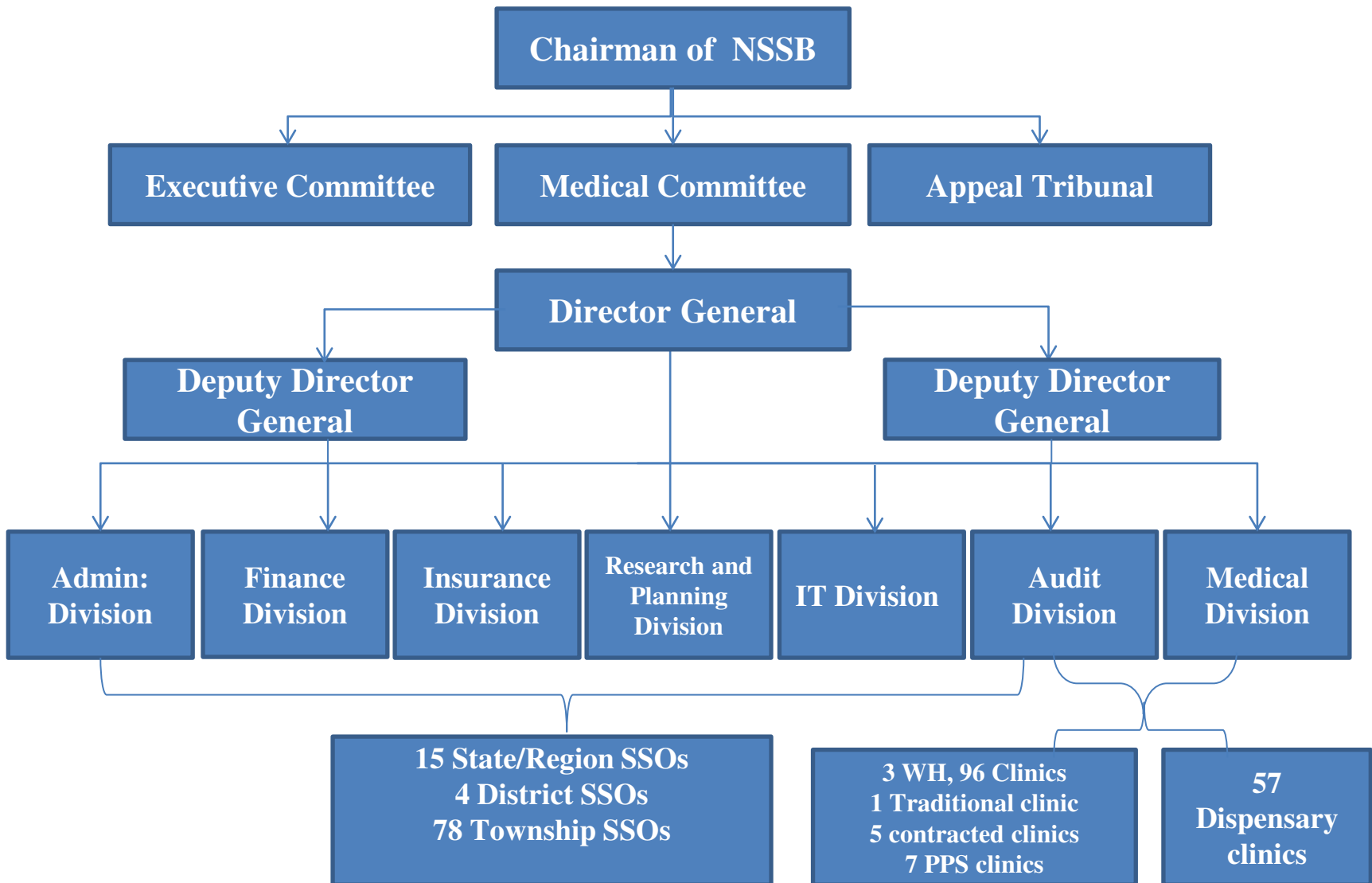
---

# ABOUT SOCIAL SECURITY BOARD



# ABOUT SOCIAL SECURITY BOARD

## Organization Structure



# ABOUT SOCIAL SECURITY BOARD

## Contribution Rate for Each Insurance System

Insurance systems		Contribution Rate		
		Employer	Employee	Total
1	Health and Social Care Insurance System	2%	2%	4%
2	Family Assistance Insurance System	Postpone		
3	Employment Injury Benefit Insurance System	1%	0	1%
4	Invalidity Benefit, Superannuation Benefit and Survivors' Benefit Insurance System	3%	3%	6%
5	Unemployment Benefit Insurance System	1%	1%	2%
6	Other Social Security System (Housing Plan)	0	25%	25%
	<b>Total</b>	<b>7%</b>	<b>31%</b>	<b>38%</b>

# ABOUT SOCIAL SECURITY BOARD

**Number of  
Registered  
Establishments**

**32,738**

**Number of  
Registered  
Employees**

**1,313,616**



**Yangon Workers' Hospital has been established on 1-9-1962, upgraded on 13-6-1964 from 150 bedded to 200 bedded and upgraded as 250 bedded Hospital in September, 1998**

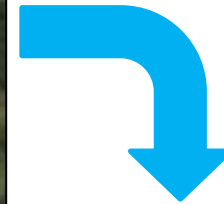


# Mandalay Workers' Hospital(150)Bedded (15-5-1990)





**100 bedded Tuberculosis Hospital has been established since 20-4-2003 and has been changed as Htan-Tabin Workers' Hospital on 16-2-2016.**



# Providing Medical Treatment by Mobile Medical Unit



# Social Security Board-Care Well Contracted Clinic (Hlaing Tharyar)





# Photos of clinics with PPS model as pilot



SSB-MYATTAWWIN Clinic



SSB-DECKKEENADIPAR Clinic



SSB-MYAT MON Clinic

# Providing Medical Treatment at work places by physicians and doctors





# Providing Medical Treatment at work places by physicians and doctors





# Issuing cash benefit to survivor of insured worker



# Conducting Awareness Raising about Social Security Scheme



**Loikaw, Kayah**



**Myitkyina, Kachin**



**Hpa-An, Kayin**

# ISSUES AND CHALLENGES OF INFORMATION SYSTEM DEVELOPMENT

## System/Things

- Number of Insure Persons and Employers
- Implementation of the new contribution & benefit process

## Business Issues/Challenges

- Dramatically Increased
- Delay in collecting contribution and issuing benefit
- Lack of Human Resources
- Budget Limitation
- Need fund sustainable system

# ISSUES AND CHALLENGES OF INFORMATION SYSTEM DEVELOPMENT

## System/Things

Implementation of the new contribution & benefit process

## Business Issues/Challenges

- Use the paper form and manual processing for all processes
- Need awareness raising program
- Increasing demand side for health care facilities
- Limitation of opening hours of clinic and locations

**Urgent need to establish IT system to integrate the whole system**

# ISSUES AND CHALLENGES OF INFORMATION SYSTEM DEVELOPMENT

## System

- Social Security ID card Printing system
- Offline registration program that was installed on each township office (developed at 2011)

## Technical Issues/Challenges

- No centralized database
- Duplication of SSN
- Used a separate object data file (.dat) for each worker and employer
- Data transfer by DVDs
- Stored in the Head Office Main Server
- No Validation Check/ No log files
- No integration
- Limited scopes
- Facing some fraud actions
- Cannot control internal workers migration



# ABOUT FOUR REFORMS FOR SSB

## IT Reform

- To integrate the whole system with centralized database
- To provides worker/employer registration online
- To collect contribution with online/e-payment
- To get the correct data and information on time
- To give benefit and claim with e-payment and e-Money
- To reduce time and cost

## Medical Reform

- To provide effective and effectively health care services

# ABOUT FOUR REFORMS FOR SSB

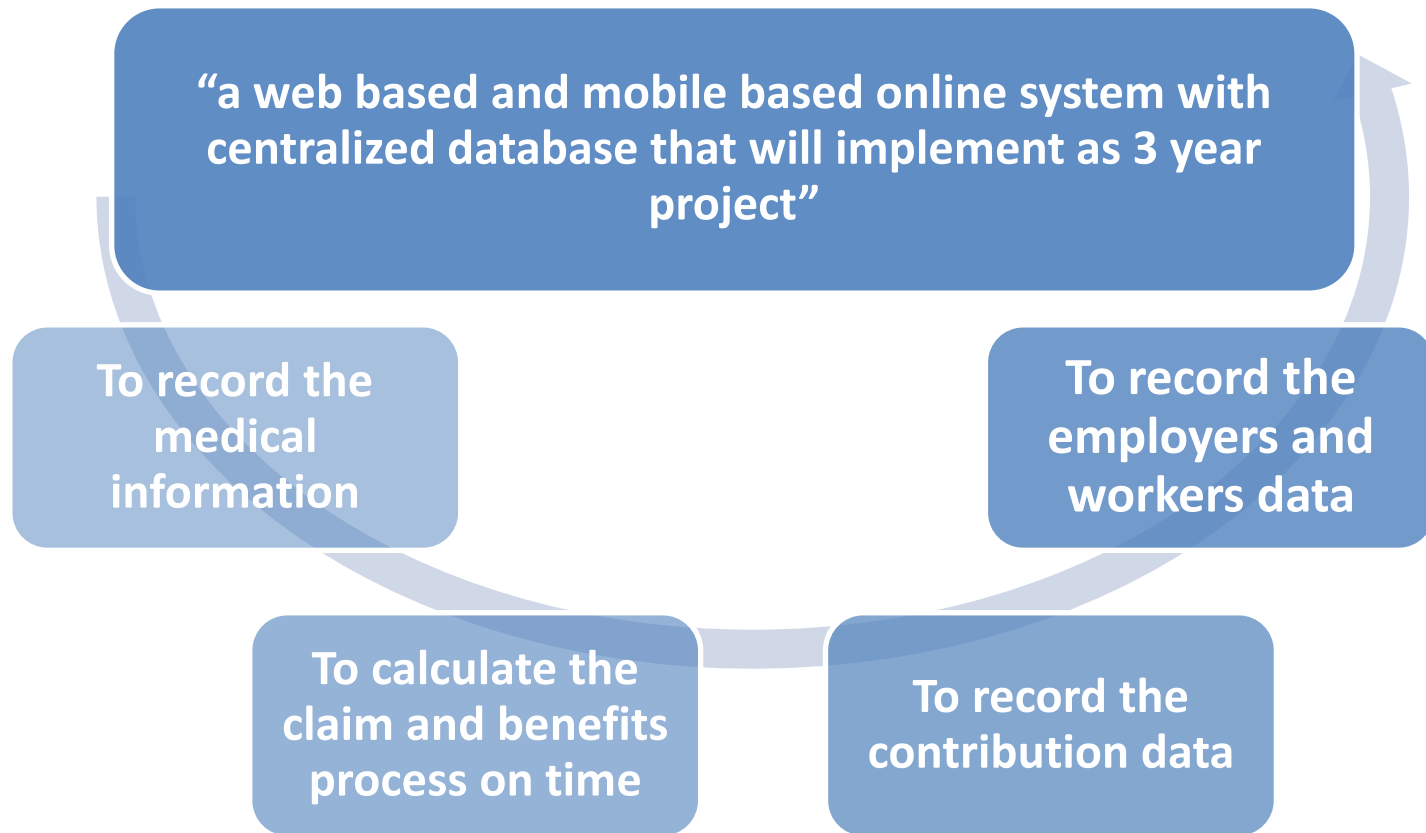
## Administrative Reform

- To streamline the current business flows complexity
- To reduce the services time and cost
- To provide one-stop-services
- To reduce the burden on the staff
- To support the client centric system for both workers and employers

## Legal Reform

- To become the law compliance with international standards and local conditions

# IT REFORM (SSB INFORMATION SYSTEM)





# IT REFORM (SSB INFORMATION SYSTEM)

Data Center implementation



SSB core business processes



e-Payment/e-Money Process



Smart card printing process

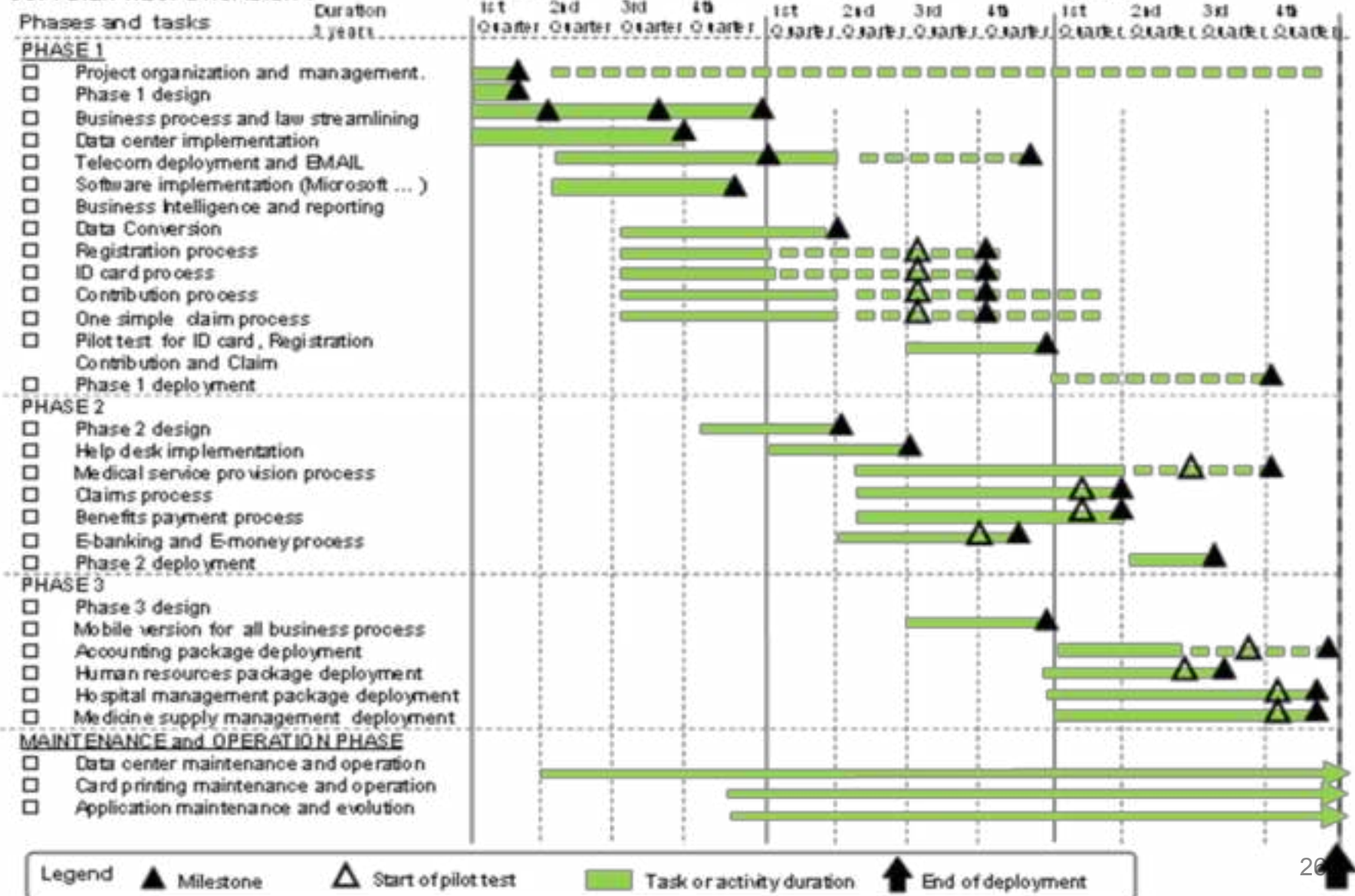


Package Software Development Process

# IT REFORM (SSB INFORMATION SYSTEM)

SSB IS project overview

SUPPLIER RESPONSABILITY



# IT REFORM (SSB INFORMATION SYSTEM)

## Addressing the challenges

- To streamline all business process
- To improve the data registration efficiency
- To improve the current services and workflow
- To support the registration, contribution payment and benefit claiming processes for the eligible persons
- To guarantee and promote the medical provision services
- To communicate easily among SSB facilities
- To increase the trusts upon the SSB

# IT REFORM (SSB INFORMATION SYSTEM)

## Targets to be achieved

### 1<sup>st</sup> Year

- Data Center Main Site Implementation Process
- Telecommunication Infrastructure Setting Up Process
- Telecommunication Cabling Process
- Microsoft Software Platform Setting up Process
- SSB IS Application Development and Deployment Process
- Smart Card Printing Process

# IT REFORM (SSB INFORMATION SYSTEM)

## Targets to be achieved

### 2<sup>nd</sup> Year

- Help desk implementation process
- Medical provision services process
- Claims process
- Benefits payment process
- E-banking and E-money process
- Training for SSB Staff

# IT REFORM (SSB INFORMATION SYSTEM)

## Targets to be achieved

### 3<sup>rd</sup> Year

- Accounting package deployment process
- Human Resources package deployment process
- Hospital management package deployment process
- Medicine supply management deployment process

# IT REFORM (SSB INFORMATION SYSTEM)

## Current Status

- Procurement and tendering processes were finished
- Pending a final decision to proceed



# Photos of IT Reform Process



**Give Knowledge Sharing  
about MIS by ILO,  
IT Expert**





## Photos IT Reform Process



**Presented to Minister about MIS Development by ILO**

# Photos IT Reform Process

## Discussion with SSB BOD



## Discussion with TOR Review Team

# DATA ENTRY AND CLEANING PROJECT

- To cope with the existing SSN duplicated
- To have a correct for SSB Information System Project
- To be ready to migrate all accurate registered information
- To systematically analyses of all results using the reporting tools
- To produce a final database with the clean information
- To provide missing information that will have to be collected in the township

# DATA ENTRY AND CLEANING PROJECT

- one year project
- started on (8/2018) and end on (8/2019)
- 12 months length total, but 9 months of full team capacity

# DATA ENTRY AND CLEANING PROJECT

## General Outcomes

No	To Do Lists	Expected Target
1	<b>Data Cleaning Process</b> <ul style="list-style-type: none"><li>➤ To Analyze the existing employers and workers registered files on Master Server</li><li>➤ To move the resulted (*.dat files) from Main Server to operating server</li><li>➤ To crawling and importing the (*.dat files) into the Database server on operating server</li><li>➤ To do data analyzing on the records of Database</li><li>➤ To create business rules for data cleaning</li><li>➤ To group and update workers and employer data</li></ul>	About 3.3 Million Records (*.dat file by password encrypted)
2	<b>Data Entry Process</b> <ul style="list-style-type: none"><li>➤ To do data entry for the manual workers registered form (Form2) directly into the database</li></ul>	550,000 records
3	<b>De-Duplication Process</b>	The combined records from the cleaned data from 3.3 million files and 550,000 records of data entry process

# DATA ENTRY AND CLEANING PROJECT

## Data Cleaning Progress Findings

No	Analysis Findings	Number
1	Worker Registered File	1,857,381
2	Employer Registered File	26,203
3	Blank File (only SSN)	1,416,557
4	Invalid File	4,682
	Total File in Main Server	3,304,823

## Employers SSN Duplication Findings

No	Number of Duplicated Times	Number of SSN Duplicate	Total Counts
1	6	1	6
2	4	94	376
3	3	406	1,218
4	2	2,490	4,980
5	1	19,623	19,623
	Total	22,614	26,203

# DATA ENTRY AND CLEANING PROJECT

## Workers SSN Duplication Findings

No	Number of Duplicated Times	Number of SSN Duplicate	Total Counts
1	40	1	40
2	10	17	170
3	9	63	567
4	8	296	2,368
5	7	1,948	13,636
6	6	7,457	44,742
7	5	10,106	50,530
8	4	48,832	195,328
9	3	86,796	260,388
10	2	462,575	925,150
11	1	364,462	364,462
	Total	982,553	1,857,381

# DATA ENTRY AND CLEANING PROJECT

## Data Entry Progress Findings

No	Process	Number of Records
1	Manual Form(2) Scanned Count	550,000
2	Data Entry Count	550,000
3	Data Verification Count	550,000



# ADVANTAGES BY DOING REFORMS

- Effectively registering and paying contribution
- Easily claiming the benefits by insure workers
- Easily carrying processes for calculating the benefits
- Timely issuing benefits to insure workers
- Saving the time by using e-money services
- Reducing unnecessary processes
- Easily accessing medical care at SSB and contracted clinic /hospitals
- Assisting function of MOHS by providing health care to insured workers

# ADVANTAGES BY DOING REFORMS

- Appearing contracted clinics and hospitals with international standard
- Reducing burden of SSB for managing clinics and hospitals
- Participating in the e-Government system
- Increasing the trust by employers and workers
- Easily expanding coverage according to SS Law
- Easily linking among SSB Head office, offices and health facilities
- Implementing SS Scheme in accord with International standards

THANKS YOU

Q&A